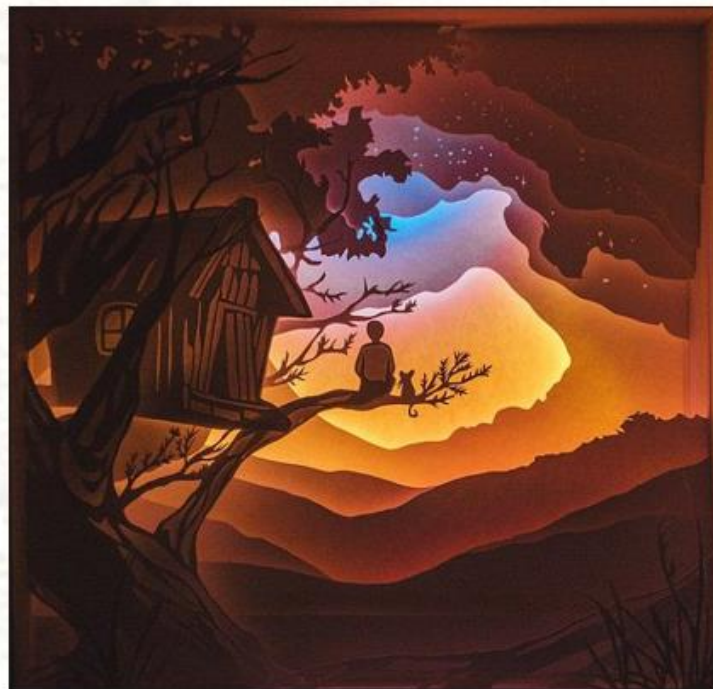


I Will Be Gone

By Erin Courtney

Scenic Design by Caitie V. Miller

Research Boards



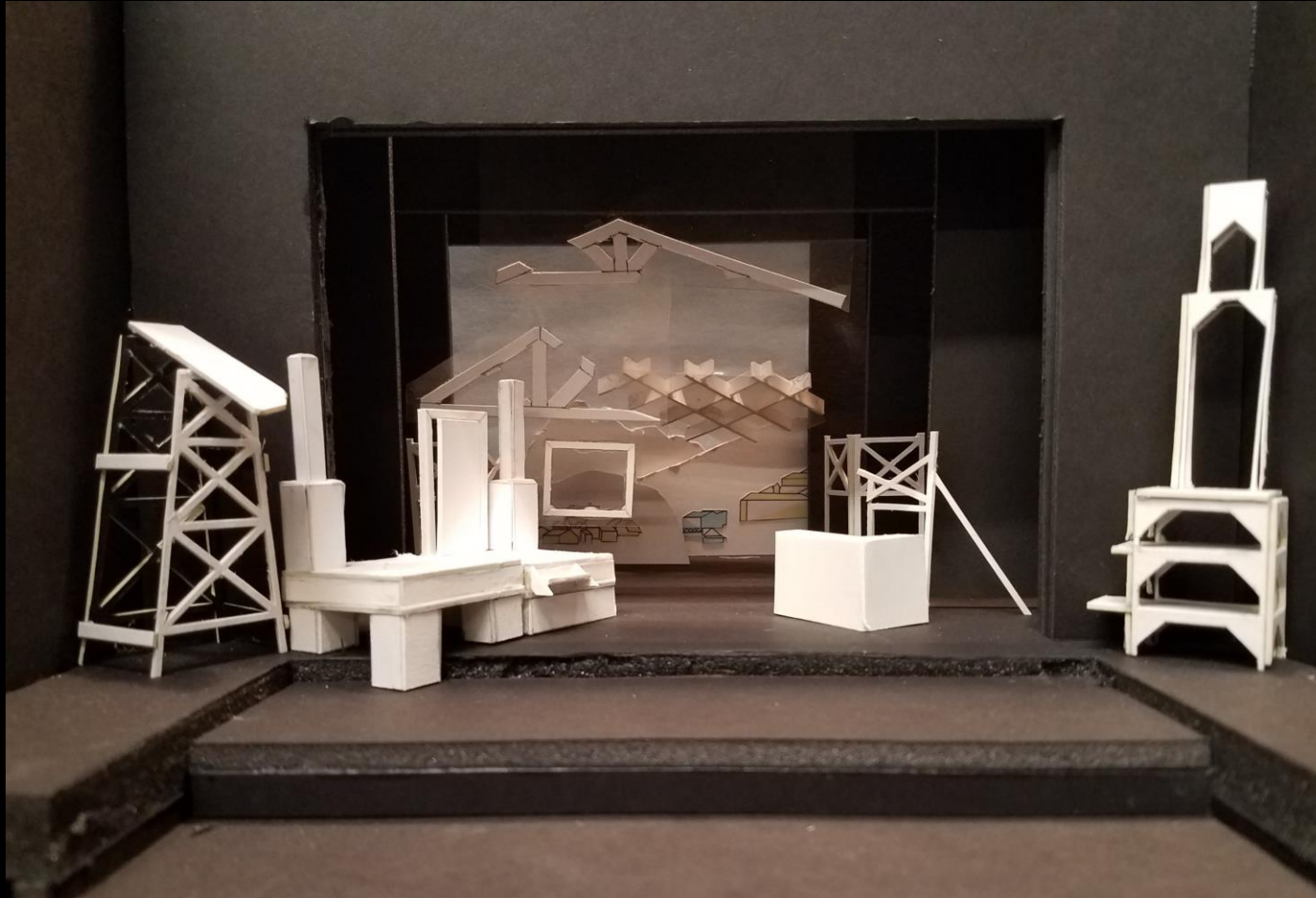


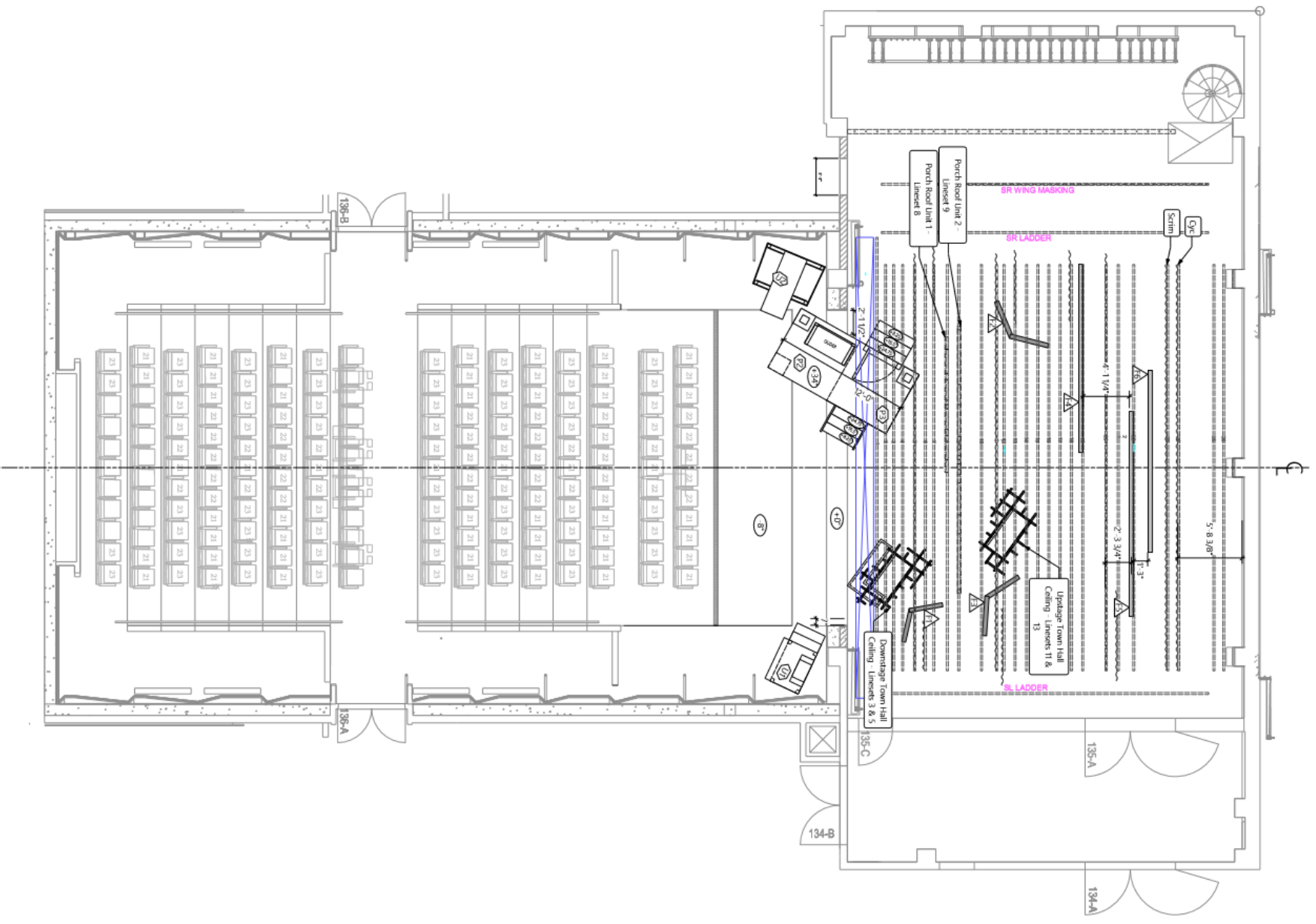


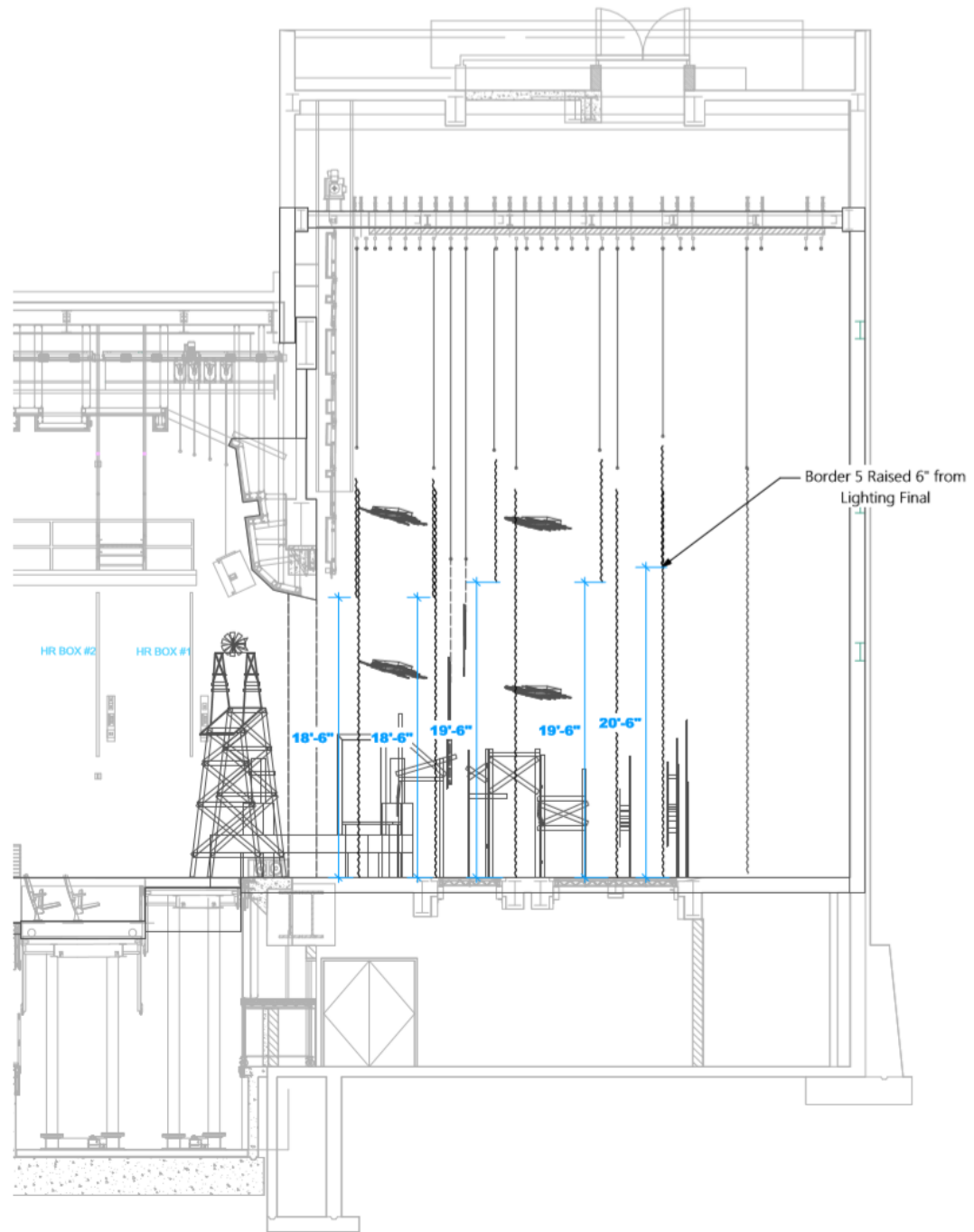


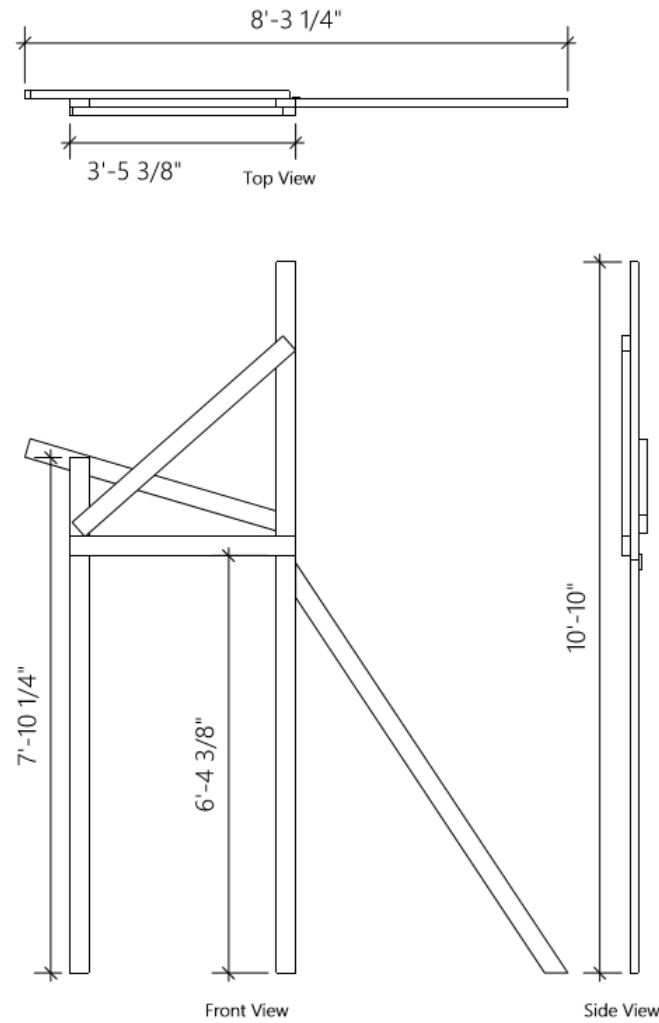


White Model

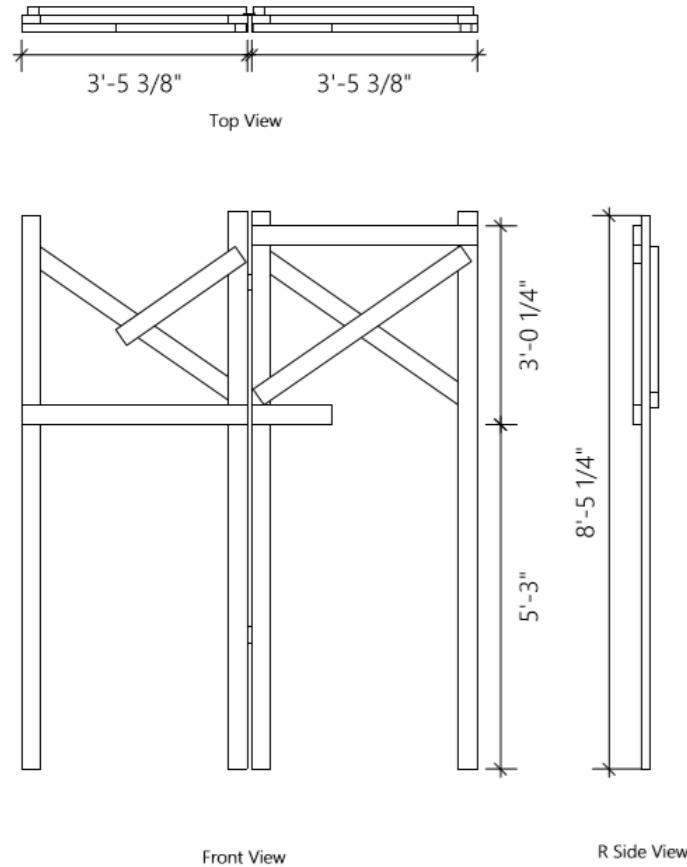




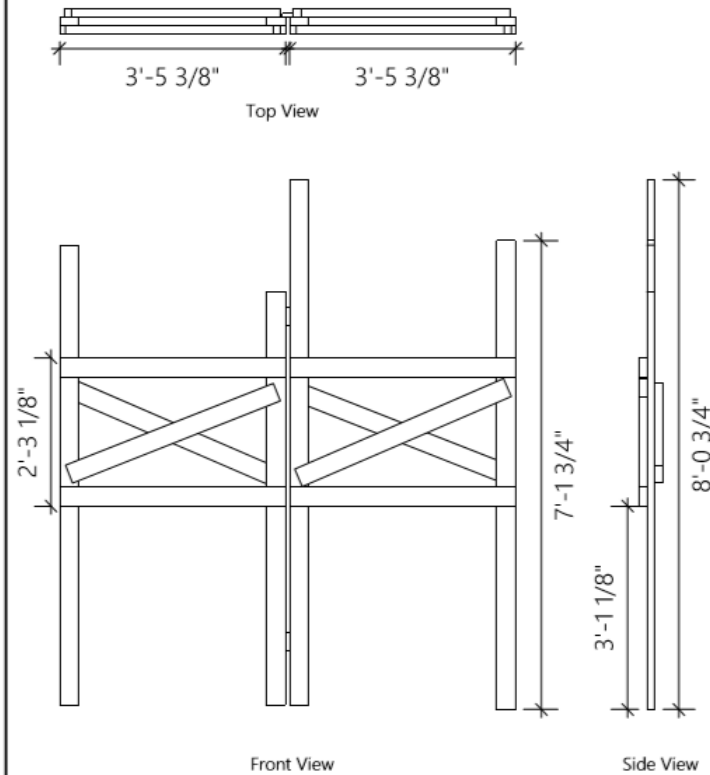




Flat One



Flat Two



Flat Three

General Notes:
 - Unit to be constructed of 2x4
 - All incomplete pieces to be cut to look broken/weathered
 - The two halves of each unit should be hinged - final angle of units to be determined in place.

I Will Be Gone

By Erin Courtney

Flat Detail - Flats 1, 2 & 3

Dir: Christina Roussos

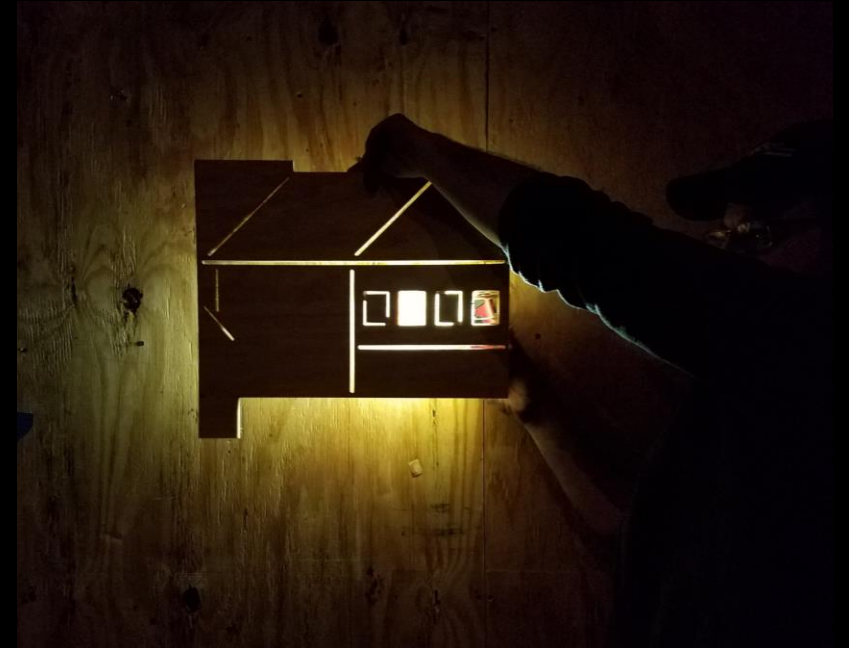
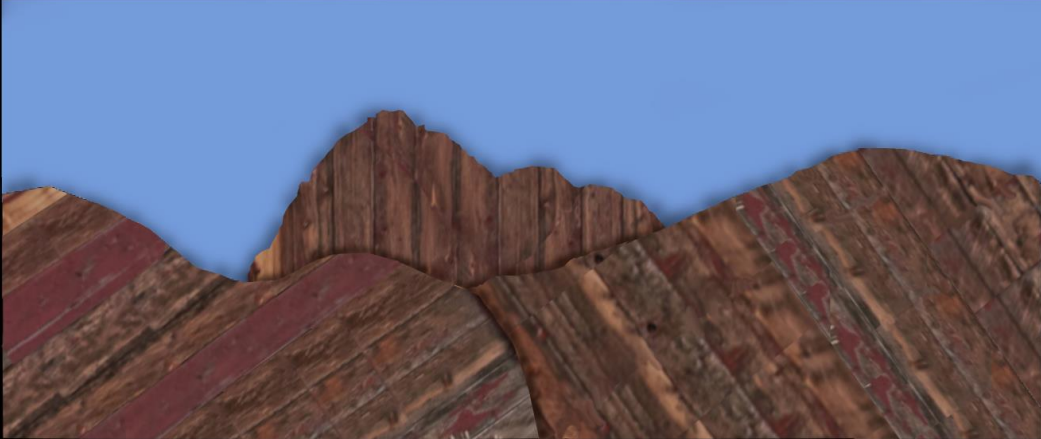
Scenic Design: Caitie V. Miller

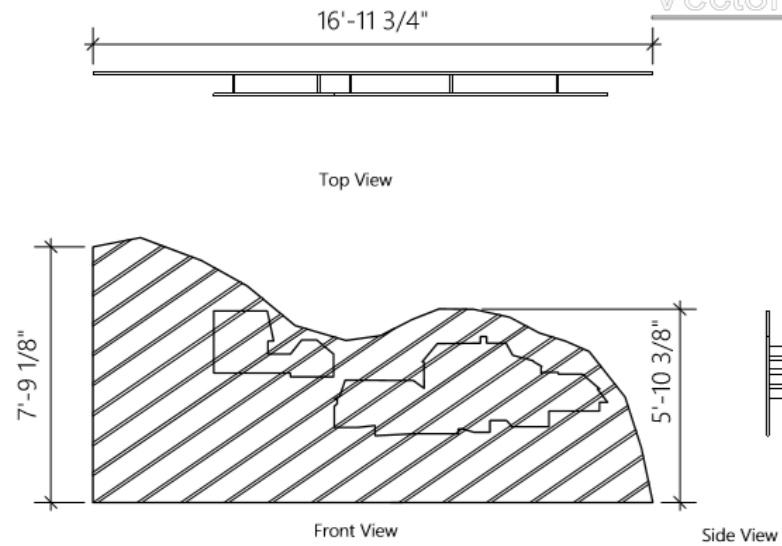
Dwg. 2 of 7

1/3/18

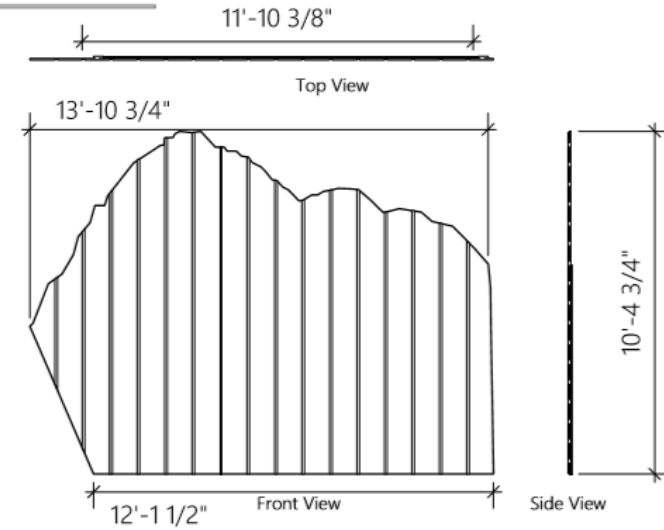
1/4" = 1' - 0"

Mountain Light Boxes

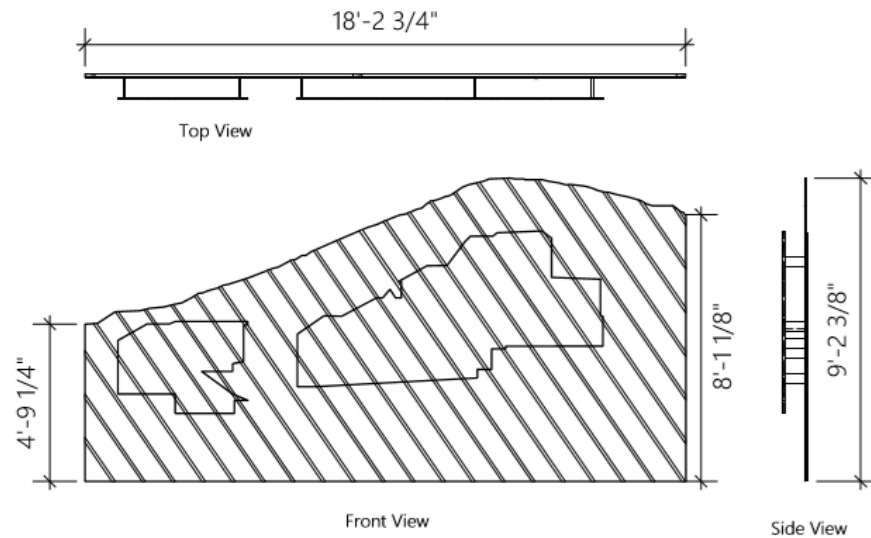




Flat Four



Flat Six



Flat Five

- General Notes:
- Flat to be framed on face of 1x4
 - Front facing of 3/4" plywood
 - "Planking" detail scored 3/8" into plywood, 1" wide
 - House shapes attached 7" in front of main flat, leaving room for lighting (see Jon for specs)
 - Houses attached by 1x4, to be laid out by TD. Should not be a closed light box
 - Houses etched to match plywood behind
 - Outlines of houses to be cut completely through front layer of plywood, allowing light to shine through.

I Will Be Gone

By Erin Courtney

Flat Detail - Flats 4, 5 & 6

Dir: Christina Roussos

Scenic Design: Caitie V. Miller

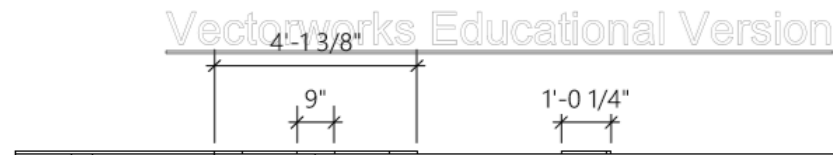
Dwg. 3 of 7

1/3/18

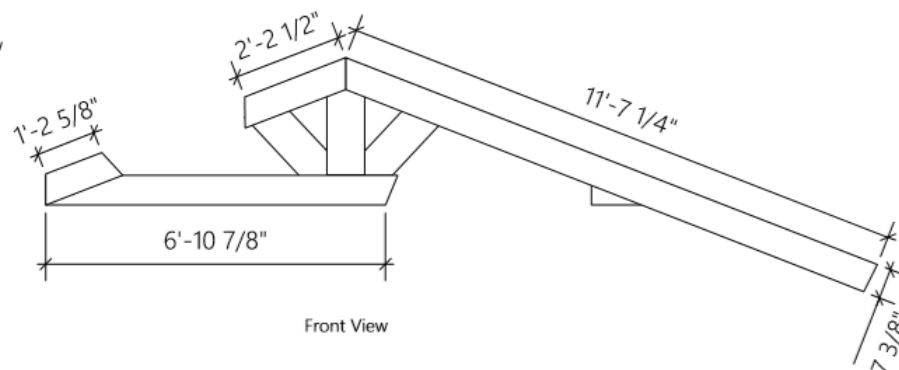
1/4" = 1' - 0"

Porch Roof Unit Two

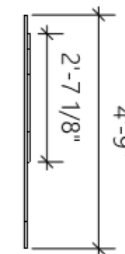
Top View



Front View



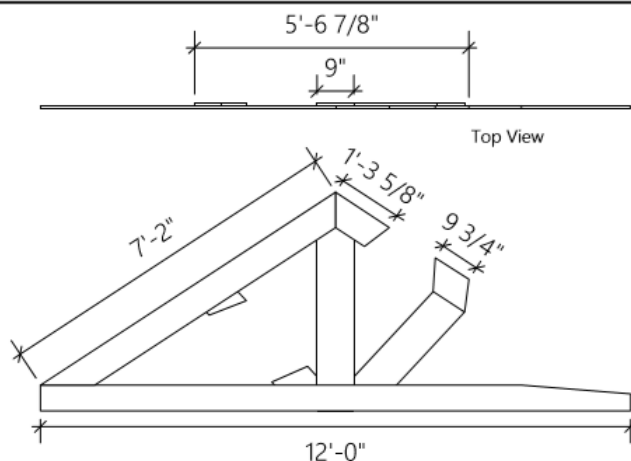
Side View



- Local Notes:
- The three inner beams are constructed of 1x material ripped to 9" width
 - The three outer beams are constructed of 1x material ripped to 7.5" width
 - The two pieces of the upper triangle are in front.
 - The three inner beams and the bottom horizontal are in the same plane behind.

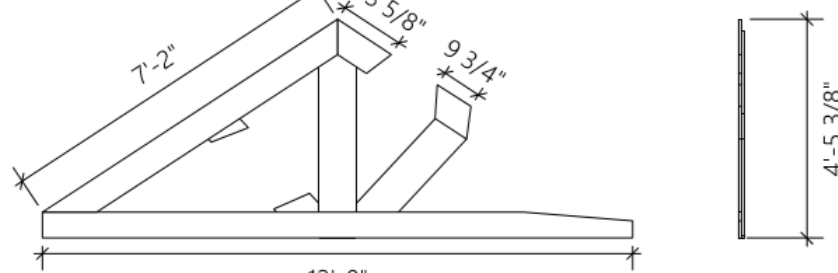
Porch Roof Unit One

Top View



Front View

Side View



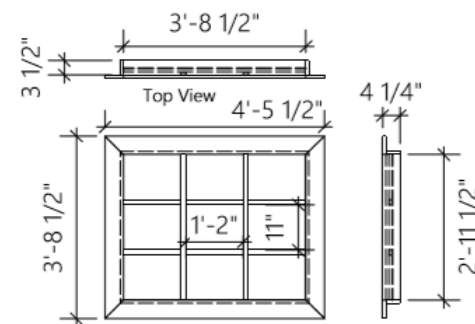
- Local Notes:
- The three inner beams are constructed of 1x material ripped to 9" width
 - The three outer beams are constructed of 1x material ripped to 7.5" width
 - The three outer beams are in one plane, in front of the three inner beams in the back plane

- Local Notes:
- The return for the window is constructed of 1x4
 - Window hung from smaller triangle unit
 - Window panes made of Plexiglass

Porch Window

Front View

Side View



I Will Be Gone

By Erin Courtney

Porch Flown Scenery

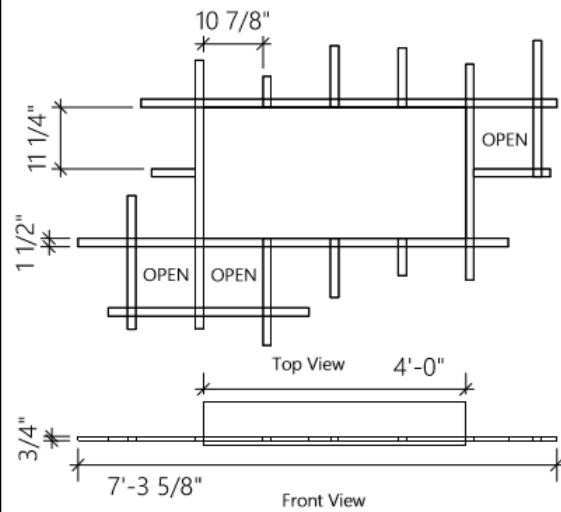
Dir: Christina Roussos

Scenic Design: Caitie V. Miller

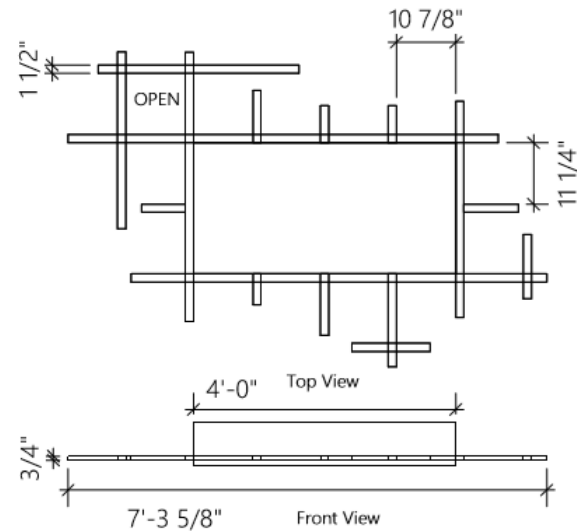
Dwg. 4 of 7

1/3/18

3/8" = 1' - 0"



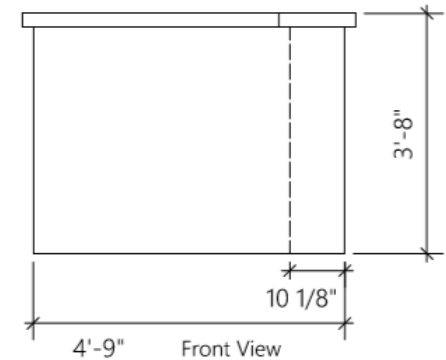
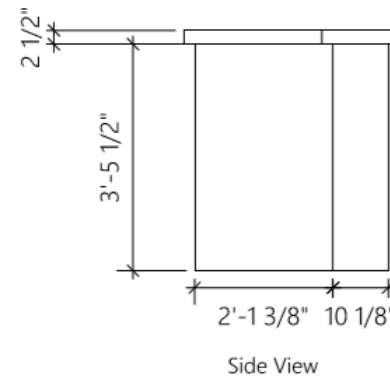
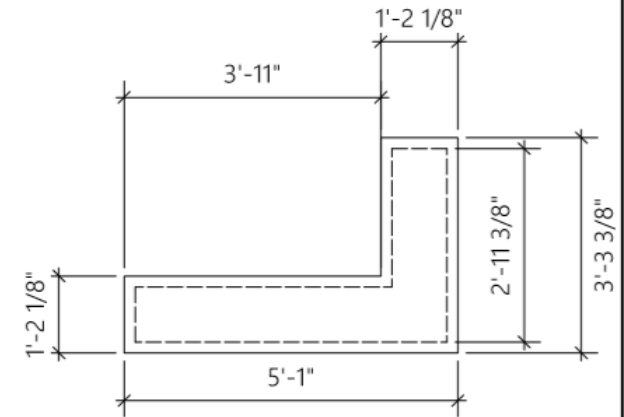
Upstage Town Hall Ceiling Unit



Downstage Town Hall Ceiling Unit

- Local Notes:
- Cross beams are 1.5" w by 0.75" h. I think they could be carved out of 3/4" plywood, allowing the crossing of the verticals and horizontals to have a seamless connection. I would like to consult with Jeff about what he thinks would most give the appearance of a ceiling.
 - The inner 8" high box will hold fluorescent tubes, to be provided by Lighting. It could shrink in depth if necessary, depending on the needs of lighting.
 - The fluorescent box should be enclosed on all sides but the bottom

- Local Notes:
- Countertop constructed of plywood;
 - 2.5" depth created by 1/4" scrap lauan
 - Sides faced with 1/4" lauan



I Will Be Gone

By Erin Courtney

Town Hall Units

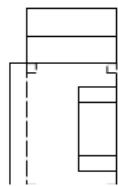
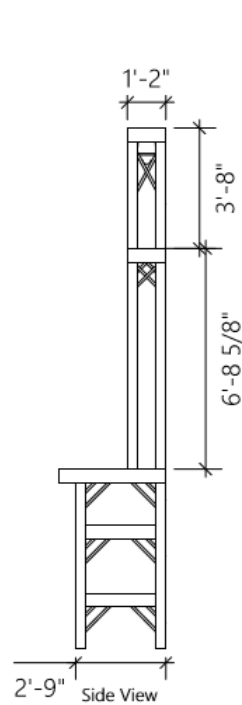
Dir: Christina Roussos

Scenic Design: Caitie V. Miller

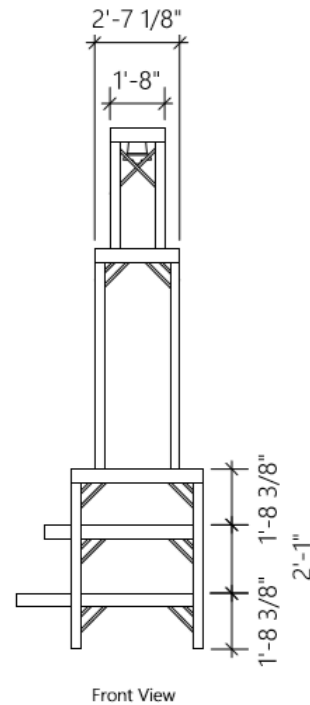
Dwg. 5 of 7

1/3/18

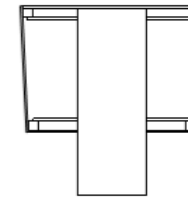
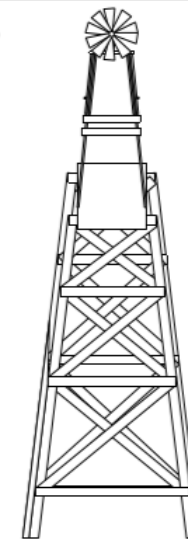
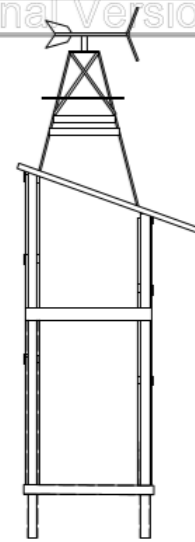
1/2" = 1' - 0"



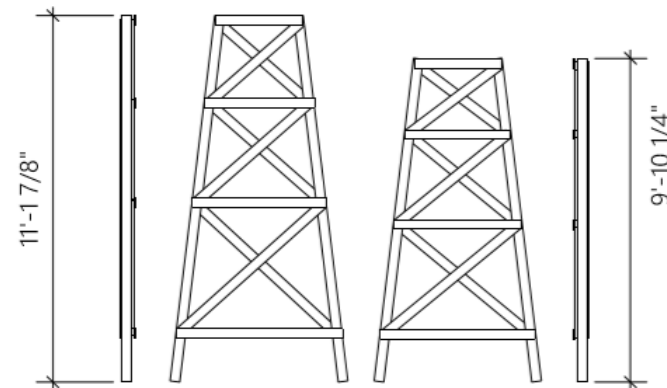
"Treehouse" Unit DSL



- Local Notes:
- The bottom half of this unit must be strong enough for actors to stand on. The stage right side should be climbable.
 - The top half is decorative
 - The bell in the top tower does not need to function, though ideally it would not be so rigid it doesn't move with the unit
 - I believe we discussed the verticals being made of 4x4
 - The decorative diagonal pieces are 3/4" plywood ripped to 3/4" thick
 - Platform pieces made of 3/4" plywood, with ripped pieces as facing for each platform area.



- Local Notes:
- Metal Windmill/Weathervane on top - will be purchased
 - Verticals of trellis pieces constructed of 4x4
 - Horizontals and cross pieces are constructed of 3/4" plywood ripped to width
 - Slanted "trough" piece is 3/4" plywood, with the onstage edge uneven and broken-looking



I Will Be Gone

By Erin Courtney

Units 1 and 2 (DS of Proscenium)

Dir: Christina Roussos

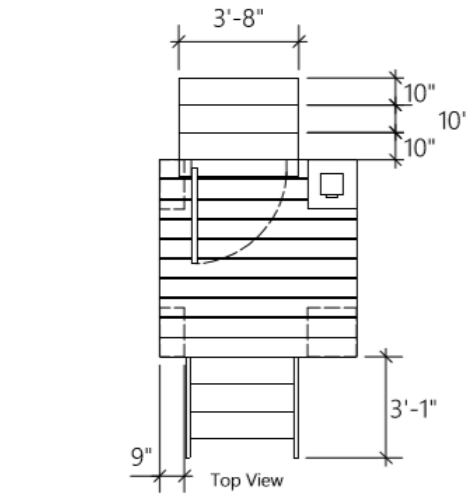
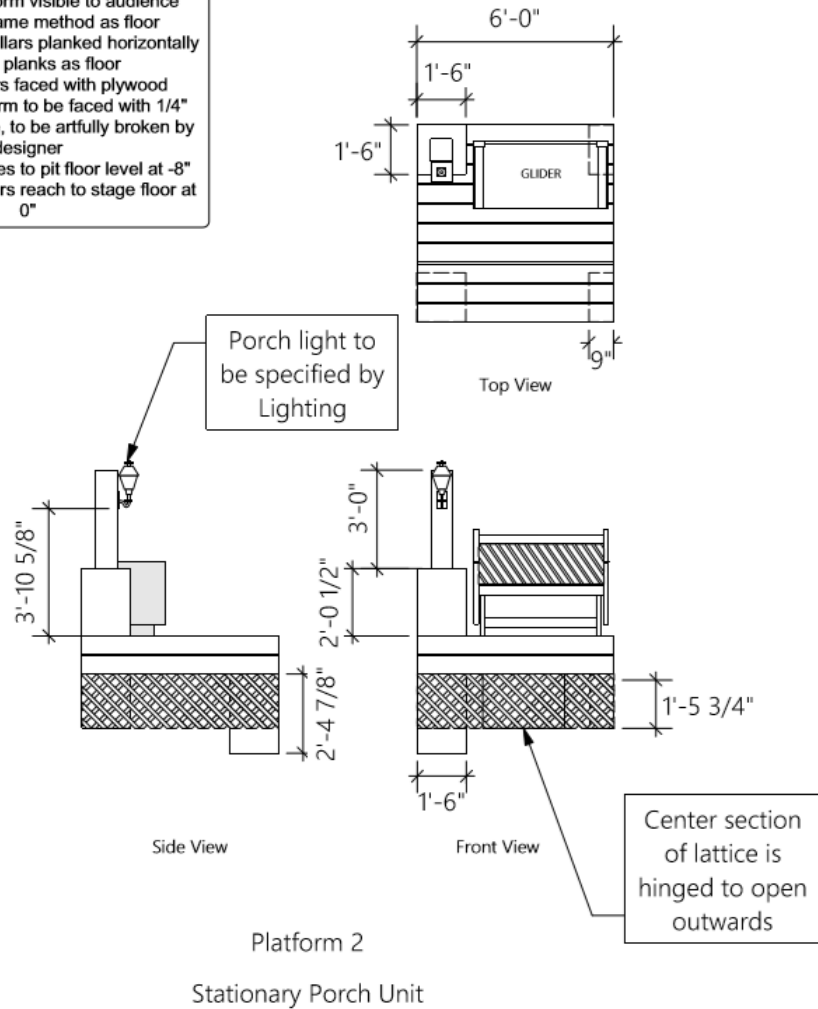
Scenic Design: Caitie V. Miller

Dwg. 6 of 7

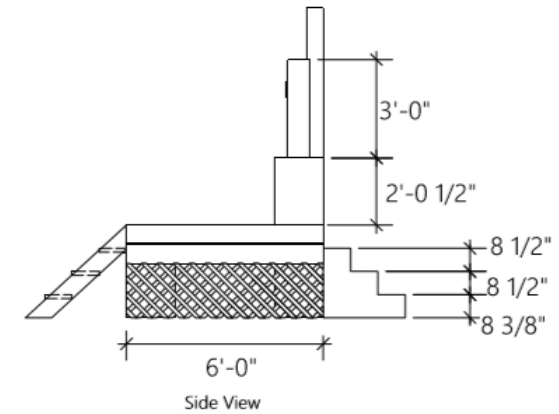
1/3/18

1/4" = 1' - 0"

- Local Note:
- Stationary Porch Unit - remains in place after Porch "collapses"
 - Floor of platform planked in 1/4" material ripped to 6.75" width with 1/2" gap between planks
 - Sides of platform visible to audience planked in same method as floor
 - Base of upper pillars planked horizontally in same planks as floor
 - Bottom pillars faced with plywood
 - Beneath platform to be faced with 1/4" thick wood lattice, to be artfully broken by designer
 - DS pillar reaches to pit floor level at -8"
 - Other three pillars reach to stage floor at 0"



- Local Note:
- Rolling Porch Unit - breaks away after Porch "collapses"
 - Floor of platform planked in 1/4" material ripped to 6.75" width with 1/2" gap between planks
 - Sides of platform visible to audience planked in same method as floor - this does not include the side facing the other porch unit
 - Base of upper pillars planked horizontally in same planks as floor
 - Bottom pillars faced with plywood
 - Upper pillar has the same base plate as the porch light from the DS pillar - intent is to look as if it broke off
 - Beneath platform to be faced with 1/4" thick wood lattice, to be artfully broken by designer
 - Hidden within pillars are rolling casters at least 6" high
 - Door number 8 from prop storage will be used



I Will Be Gone		
By Erin Courtney		
Porch Units		
Dir: Christina Roussos		
Scenic Design: Caitie V. Miller		
Dwg. 7 of 7	1/3/18	3/8" = 1' - 0"